



# ARCHITECTURAL PANEL COLORS

Long-Term Beauty • Unmatched Protection • Superior Quality

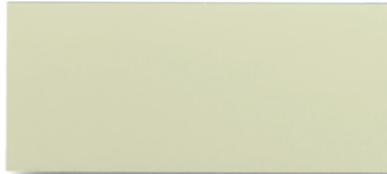
*...You Get All Three*

SLR, SNAP SEAL, FASCIA, SOFFIT, MANSARD - KXL™ FINISH

Cool Regal White



Egyptian White



Cool Sierra Tan



Forest Green



Cool Weathered Copper \*



Cool Zinc Gray \*



Cool Colonial Red



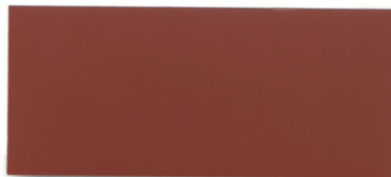
Hemlock \*



Cool Dark Bronze \*



Terra Cotta



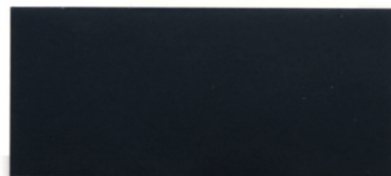
Regal Blue \*



Tahoe Blue \*



Matte Black



Jade Green \*



Leaf Green \*



\* These panel profiles and color combinations are subject to premium pricing. Your VP Builder or VP Project Manager can provide additional information.

This card provides a basic representation of standard colors. Slight variations may occur between sample materials and finished product.

## PAINT FINISHES

VP uses high-quality paint systems designed to provide long-term performance and protection. Each coating is formulated with thoroughly researched, tested and field-proven pretreatments, primers, resins and pigments that can meet your design and performance requirements. All colors shown approximate actual paint colors as accurately as possible. Actual paint colors may vary. Colors in this guide are for reference only. VP Buildings reserves the right to change color offerings shown here without notice. Metal samples with paint are available upon request.

## KXL™ Hot Dipped Galvanized & Galvalume®

This paint system combines ceramic pigmentation with polyvinylidene fluoride for superior, long-lasting performance. PVDF finishes are respected for their durability, resistance and color retention. Please note: 70% PVDF finishes meet both Kynar 500® and Hylar 5000® specifications.

CHARACTERISTICS/TEST METHOD	KXL™
<b>Dry Film Thickness</b> ASTM D-1400, D-1005, D-1438 (NCCA II-13, 14, 15) <sup>1</sup>	0.2-0.25 mil primer <sup>2</sup> , 0.7-0.8 mil top coat
<b>Specular Gloss (60)</b> ASTM D-523	10-15 <sup>4</sup>
<b>Pencil Hardness</b> ASTM C-3363 (NCCA II-12) Eagle Turquoise Pencil	HB-H
<b>Flexibility:</b> T-Bend NCCA II-9 (No cracking or tape removal of film) Mandrel ASTM D-522 (180° bend around 1/8" mandrel)	2T <sup>5</sup> No cracking
<b>Adhesion</b> ASTM D-3359 (NCCA II-5) Reverse Impact Cross Hatch	No adhesion loss
<b>Reverse Impact</b> ASTM D-2749 (NCCA II-6) Impact in in.lb = 2000 X metal thickness for steel	No cracking or adhesion loss <sup>5</sup>
<b>Abrasion Resistance</b> Falling Sand ASTM D-968 Liters to expose 5/32" of substrate transit Based on topside to backside contact in transit	65 ± 15 l/mil of film Acceptable
<b>Mortar Resistance</b> AAMA 605.2 <sup>6</sup> – 24-Hour Pat Test	No effect
<b>Detergent Resistance</b> ASTM D-2248 – 3% Detergent, 100°F, 72 hrs.	No effect
<b>Acid Pollutants Resistance</b> ASTM D-1308, Proc. 7.2 10% Muriatic Acid (15 min.) 20% Sulfuric Acid (24 hrs.) AAMA 605.2 Test 7.7 3.1 – 70% Nitric Acid Vapors (30 min.) Kesternich SO <sub>2</sub> CyclicTest (2 liters)	No effect No effect < 5 units color change <sup>7</sup> , 10 cycles <sup>8</sup>
<b>Alkali Resistance</b> ASTM D-1308 10%, 25% Sodium Hydroxide (1 hr.)	No effect
<b>Salt Spray Resistance</b> ASTM B-117 – 5% Salt Fog @ 95°F	1000 Hours <sup>9</sup>
<b>Humidity Resistance</b> ASTM D-2247	1000 Hours <sup>10</sup> (100% Relative Humidity @ 95°F)
<b>Weatherometer Test</b> ASTM G-23 <b>Color Change</b> ASTM D-2244 <b>Chalking Resistance</b> ASTM D-4214	2000 Hours < 2 units change <sup>7</sup> Maximum #8
<b>Exterior Weathering</b> Florida Exposure ASTM D-2244 Color 5 years @ 45°S ASTM D-4214 Chalk AAMA 605.2 Film Erosion	Max. 5 units color change <sup>7</sup> Maximum #8 Less than 20% film loss

\* These panel profiles and color combinations are subject to premium pricing. Your VP Builder or VP Project Manager can provide additional information.

Consult specifier or agencies to meet specific Cool Building requirements.

Color (KXL finish only)	Solar Reflectivity	Emissivity
Cool Regal White	0.637	0.91
Cool Sierra Tan	0.337	0.89
Cool Dark Bronze	0.091	0.92
Cool Weathered Copper	0.115	0.91
Cool Colonial Red	0.204	0.90

- National Coil Coaters Association.
- Higher film KXL coatings and performance data available upon request.
- American Society for Testing and Materials.
- Higher and lower glosses available upon request.
- Fracturing or rupturing of substrate will rupture.
- American Architectural Manufacturers Association.
- Hunter ΔE color difference.
- No objectionable color change.
- Less than 1/8" creep from scribe.
- No more than a few #8 blisters.
- Less than 1/16" creep from scribe.Δ

All color formulations changed in 2004. Contact VP with regard to prior formulations.

Note: Oil canning in the flat areas of panels is inherent of coil steel products and shall not be cause for product refusal.

KYNAR® is a registered trademark of Atochem North America, Inc.  
HYLAR 5000® is a registered trademark of Ausimont USA, Inc.  
Galvalume® is a registered trademark of B.I.E.C. International, Inc.  
Certification of Corp. Engineers and AAMA 605.2 available upon request.



VP Buildings  
3200 Players Club Circle  
Memphis, TN 38125  
1-800-238-3246  
<http://www.vp.com>